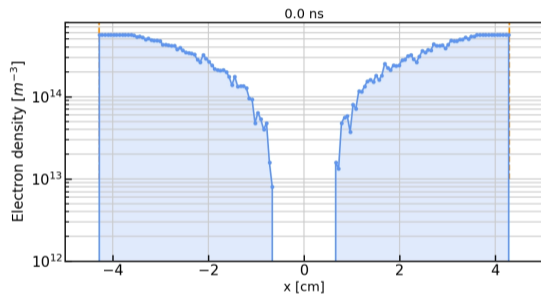
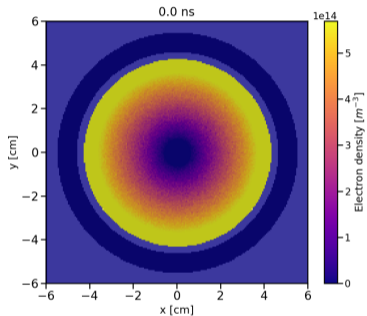


Updates on simulation of the "IC" lens

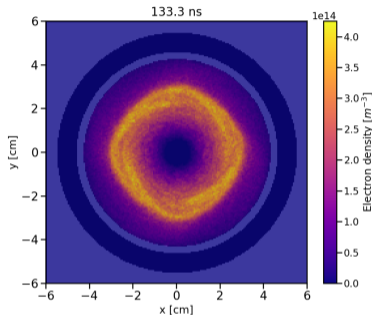
Titus Dascalu

September 10, 2020

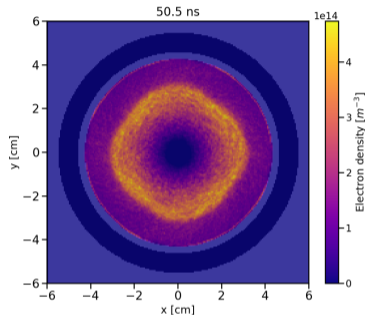
Electron cloud initial distribution



Electron cloud dynamics



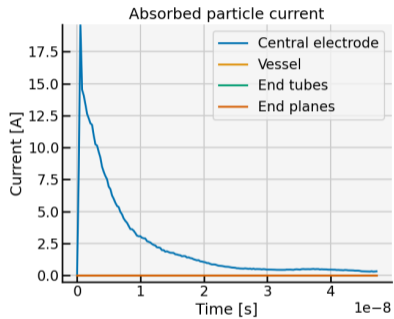
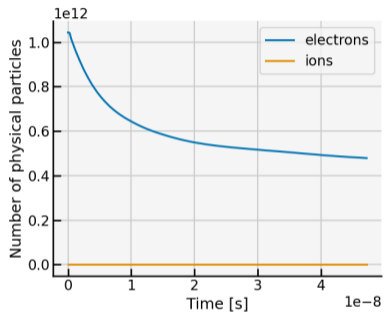
(with holes)



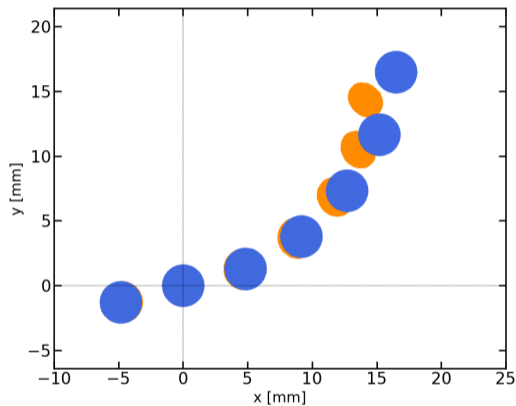
(without holes)

- ▶ The 4-fold structure of the ring can also be observed in the absence of the longitudinal holes in the central electrode

Particle loss

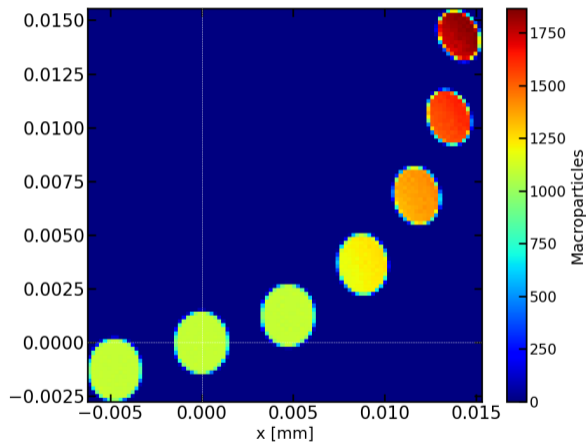


Beamlets entry and exit positions



Macroparticles at: blue - entry plane; orange - exit plane ("screen")

Beamlets profile at exit plane of the lens



Macroparticles that hit the "screen" (need to be further propagated through 67cm of drift)