

LhARA: Capture Meeting

Hin Tung Lau

June 24, 2021

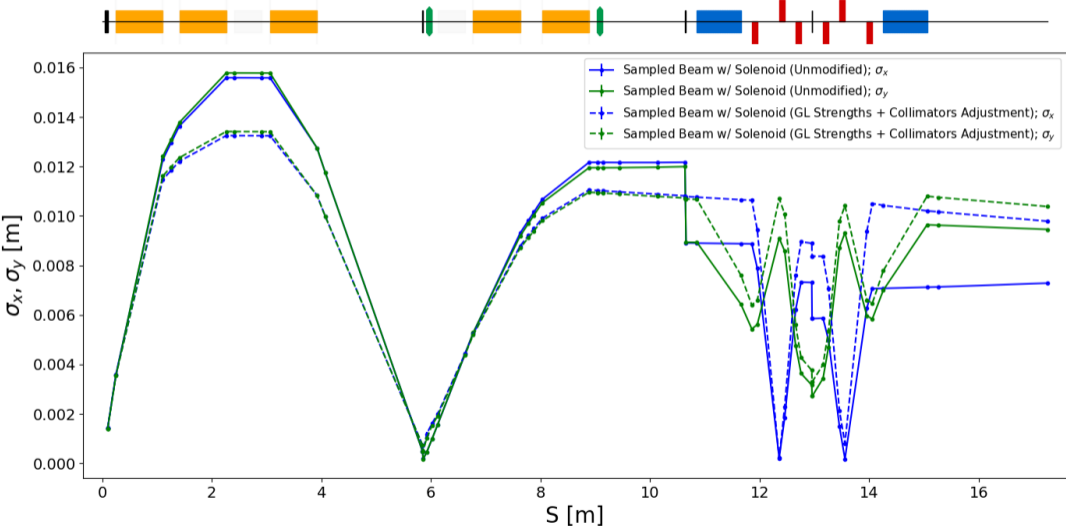
Gabor Lens Strength Modification

Gabor Lens	Strength
GL1	1.2868 \Rightarrow 1.4387 [T]
GL2	0.6671 \Rightarrow 0.5271 [T]
GL3	0.8139 [T]
GL4	0.6852 \Rightarrow 0.7284 [T]
GL5	0.6542 \Rightarrow 0.6338 [T]

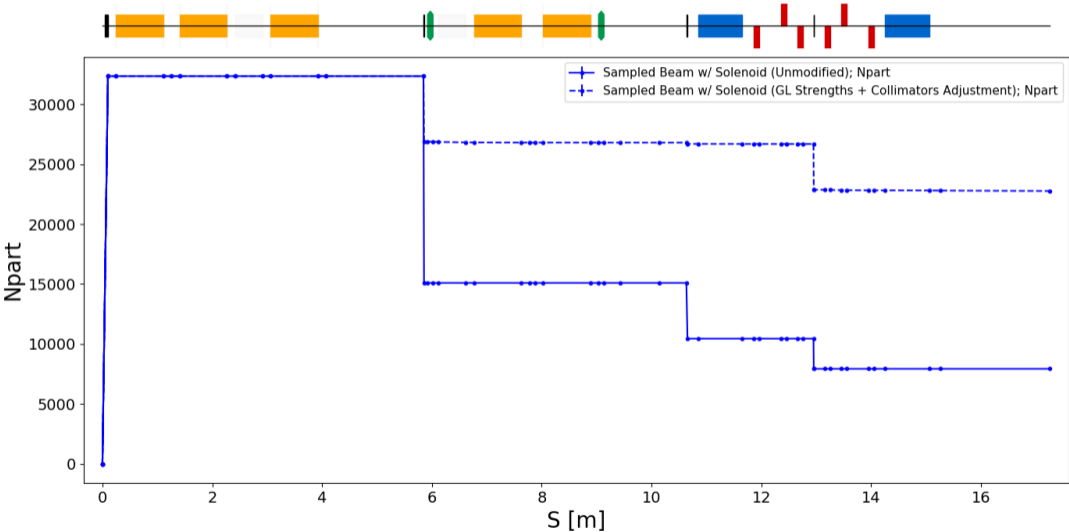
Collimators Adjustment

Collimator Name	Position	Half Width Aperture
ene_col	s = 5.856 \Rightarrow 5.753 [m]	r_x : 0.5 \Rightarrow 1.5 [mm] r_y : 0.5 \Rightarrow 1.5 [mm]
ec	s = 10.65 [m]	r_x : 20 \Rightarrow 23 [mm] r_y : 20 \Rightarrow 23 [mm]
ec_mc	s = 12.95 [m]	r_x : 12 \Rightarrow 19 [mm] r_y : 6 \Rightarrow 6.9 [mm]

Beam Size Evolution



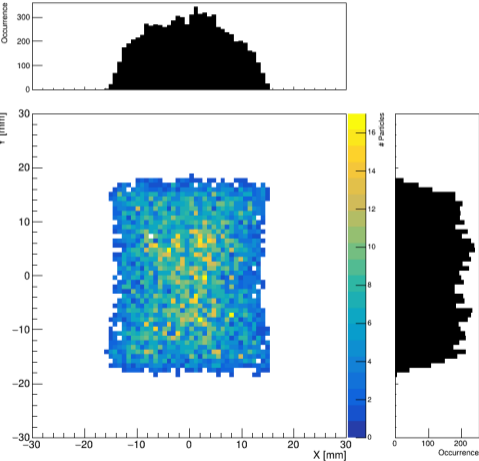
Particle Losses



End of Beam Line

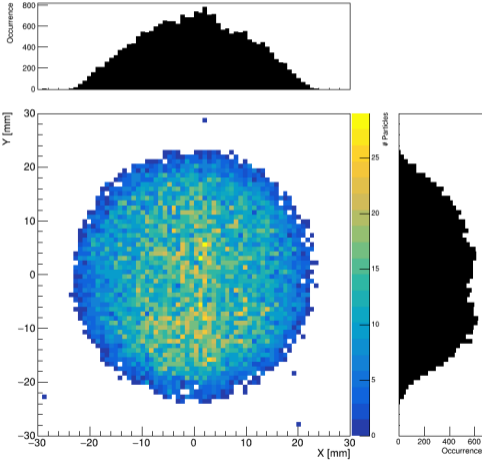
Unmodified

Sampled Beam w/ Solenoid: Stage 1 End



Modified

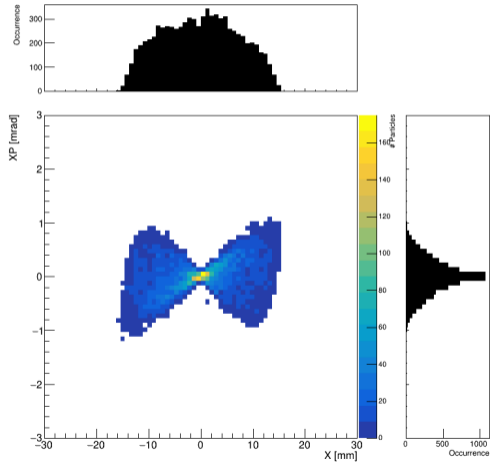
Sampled Beam w/ Solenoid (JP Modification + Energy Coll Adjustment): Stage 1 End



End of Beam Line

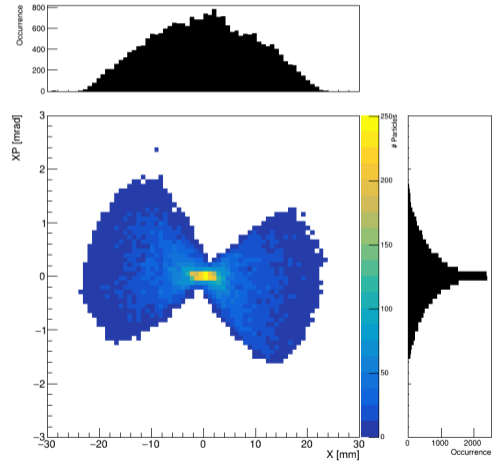
Unmodified

Sampled Beam w/ Solenoid: Stage 1 End



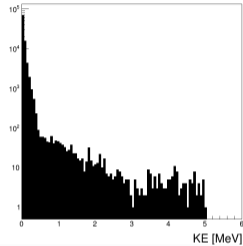
Modified

Sampled Beam w/ Solenoid (JP Modification + Energy Coll Adjustment): Stage 1 End

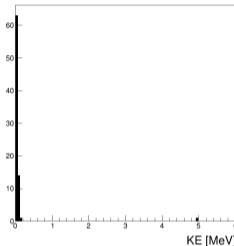


Energy Collimation with Adjusted Beam Line (for low and high energies separately)

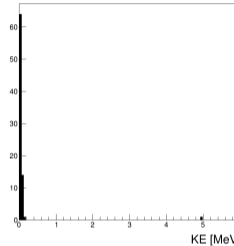
Cartesian Sampled Proton Beam (≤ 5 MeV): At Nozzle End



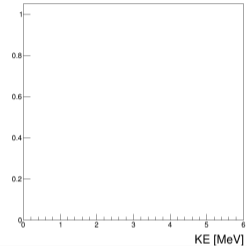
Cartesian Sampled Proton Beam (≤ 5 MeV): After First Collimator



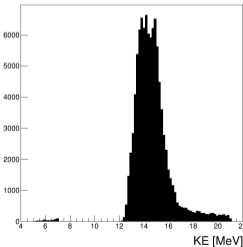
Cartesian Sampled Proton Beam (≤ 5 MeV): After Second Collimator



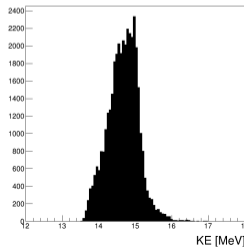
Cartesian Sampled Proton Beam (≤ 5 MeV): At End Station



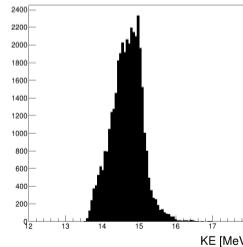
Cartesian Sampled Proton Beam (> 5 MeV): At Nozzle End



Cartesian Sampled Proton Beam (> 5 MeV): After First Collimator



Cartesian Sampled Proton Beam (> 5 MeV): After Second Collimator



Cartesian Sampled Proton Beam (> 5 MeV): At End Station

