

# SmartPhantom Prototype Update

Hin Tung Lau

October 2, 2019

Prototype 3 with the modified winding jig and frames was quite successful in tackling the alignment and tension issues experienced previously.



Figure: Modified Winding Jig.

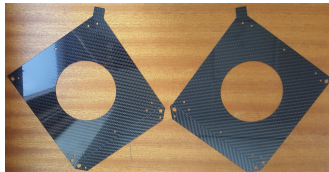


Figure: Modified Frames.

# Tension

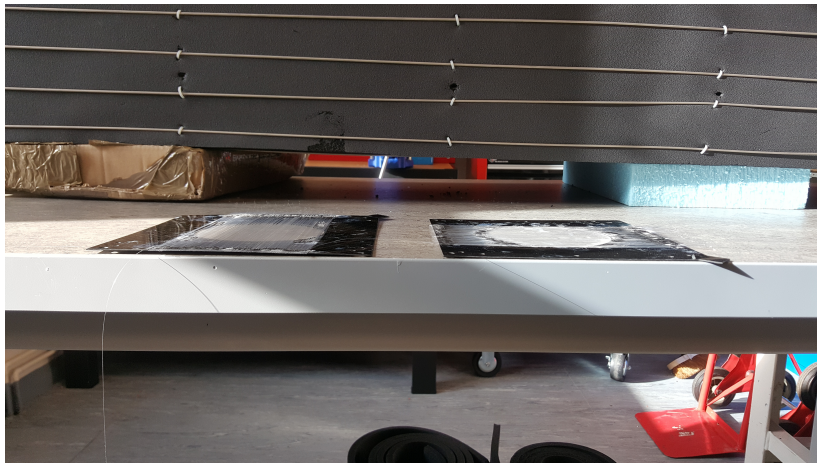
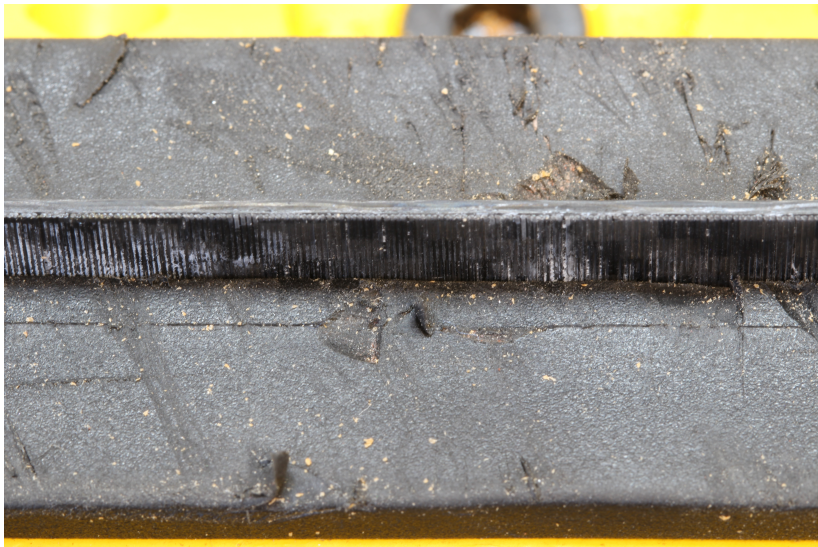


Figure: Two gluing methods were tried, on the left there is a slight bending noticeable, while practically negligible for the one on the right. The method on the right involved gluing around the aperture.

## Alignment Closeups



## Alignment Closeups



# Alignment Closeups

