

SmartPhantom Meeting: 27/11/19

Hin Tung Lau

November 26, 2019

Camera Sensitivity to UV Light

- Suspicion of whether the fibre image captured with the UV LED source is scintillation or if the camera is picking up light from the LED.
- The box monitoring camera was used to capture the UV LED source to see if it would pick up UV light.

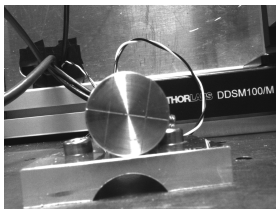


Figure: Setup from perspective of camera.

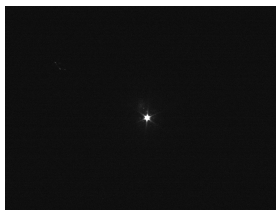


Figure: Output of camera when box covered and UV LED powered.

- Suggests camera may be sensitive to UV radiation and/or visible light comes out of LED.
- Need real source to confirm.

Sr-90 Single Fibre Test

- Sr-90 source installed into the box setup.
- Stages moved to optimized position with the mock source, however no signal found.
- Manual scan around this position failed to pick up a signal.

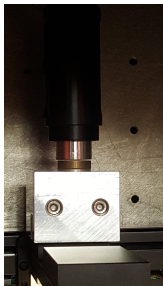


Figure: Setup from above showing distance between boot and source.

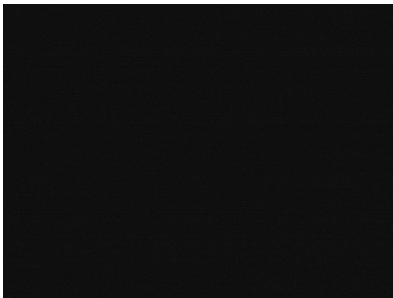


Figure: Output of camera when box covered and Sr-90 source installed and centred.