

# Nuclear diagnostics and Magnetic Resonance Imaging

## Week 3; Lecture 6; Positron Emission Tomography II

**K. Long** ([k.long@imperial.ac.uk](mailto:k.long@imperial.ac.uk))

Department of Physics, Imperial College London/STFC

**R. McLauchlan** ([ruth.mclauchlan@nhs.net](mailto:ruth.mclauchlan@nhs.net))

Radiation Physics & Radiobiology Department, Imperial College Healthcare NHS Trust

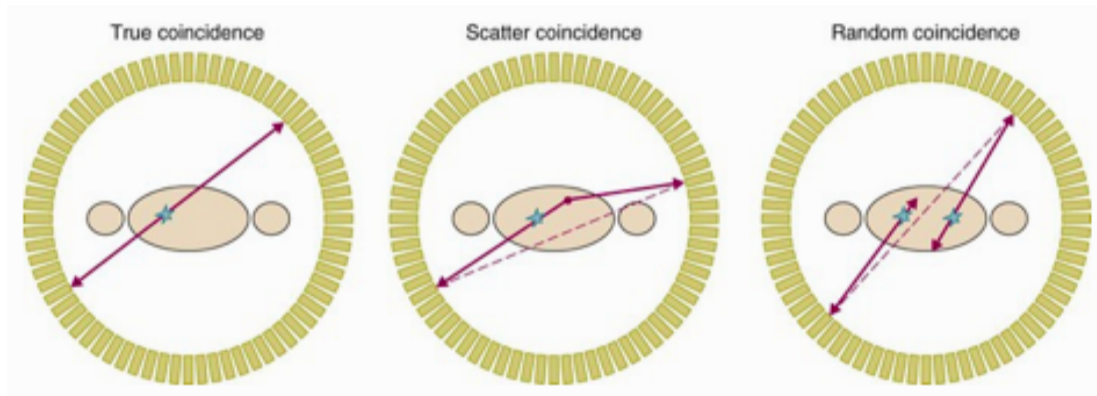
# Contents

- 1 **Event types**
  - Types of coincidence event
  - Summary of section 1
- 2 **Overview of PET systems**
  - Sample of scanner geometries
  - Pros and cons of use of absorptive collimators
  - Summary of section 2
- 3 **Data acquisition**
  - “Readout”
  - Comparison of sensitivities
  - Summary of section 3
- 4 **Corrections**
  - Normalisation
  - Random coincidences
  - Scatter coincidences
  - Attenuation
  - Dead time
  - Summary of section 4
- 5 **Examples**

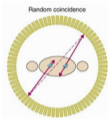
## Section 1

# Event types

# Types of coincidence event



## Random coincidence



A random coincidence arises when two PMTs each receive a signal within the coincidence time window  $\Delta t = 2\tau$

“Singles rate” in detectors  $i$  and  $j$  are  $\mathcal{R}_{si}$  and  $\mathcal{R}_{sj}$ , random-coincidence rate:

$$\mathcal{R}_{\text{random}} = \Delta t \mathcal{R}_{si} \mathcal{R}_{sj}$$

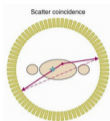
Ratio of random to true coincidences  $\propto \Delta t$ ; small  $\Delta t$  of benefit

$\mathcal{R}_{\text{random}}$  is proportional to the square of the activity in the body; true-coincidence rate rises linearly

Singles rates, and therefore  $\mathcal{R}_{\text{random}}$ , can be reduced with absorptive septa at the price of efficiency

Source of random coincidences not localised. Typical rates:  $\sim 0.1$  Hz (brain) to  $\sim 1$  Hz (abdomen). Reduces contrast & increases error in estimation of total dose

# Scatter coincidence



Scatter of one (or both) photons from single annihilation event in tissue or scanner

Pernicious since:

- Energy of scattered photon often differs little from decay photon  
→ falls within the energy detection window
- Scattered photon is in coincidence with unscattered photon  
tiny ( $\ll \Delta t$ ) additional delay from the increased path length

$\mathcal{R}_{\text{scatter}}$  proportional to activity in body; same dependence as true-coincidence rate

$\mathcal{R}_{\text{scatter}}$  can be reduced with absorptive septa at the price of efficiency

Typical rates: 0.2 – 0.5 Hz (brain) to 0.4 – 2 Hz (abdomen); scatter-event fraction can be as high as 60 – 70% for abdominal scans. Reduces contrast.

# Summary of section 1

Event types distinguished:

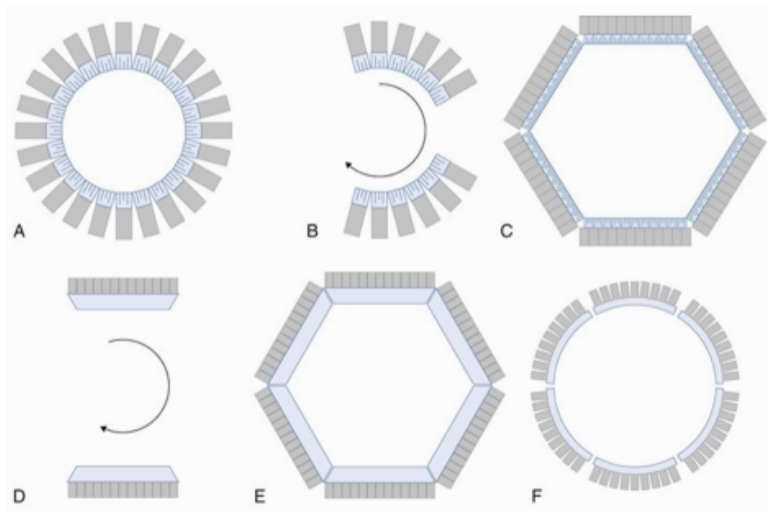
- True coincidence;
- Random coincidence;
- Scatter coincidence

## Section 2

# Overview of PET systems

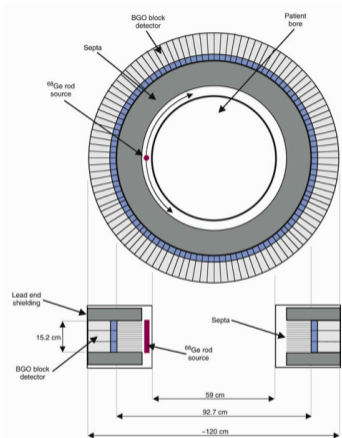


# Sample PET scanner geometries

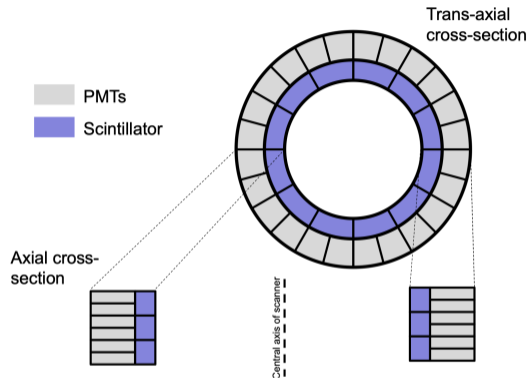


- A) Full ring of block detectors
- B) Partial ring of block detectors
- C) Hexagonal "ring" of quadrant-sharing panel detectors
- D) Dual-headed gamma camera
- E) Hexagonal array of gamma cameras
- F) Ring of curved plates of NaI(Tl)

# With and without septa



$^{68}\text{Ge}$  rod for transmission scans to allow absorption correction  
 Retracted into Pb shield when not in use



Large increase in sensitivity  
 Increase in ratio of  
 scatter to true coincidences  
 random to true coincidences

## Summary of section 2

Systematic effects are dependent on detector geometry

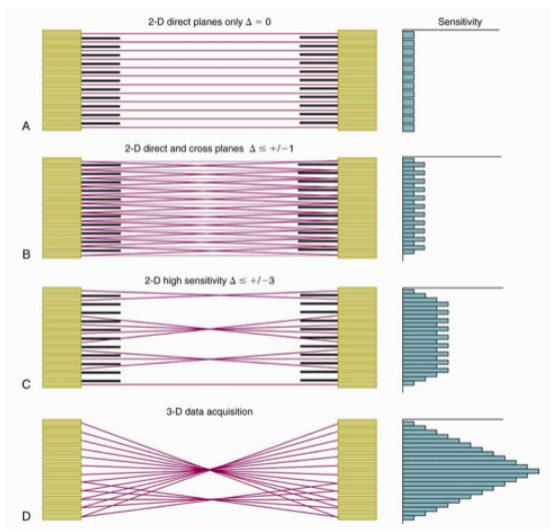
Correction for absorption can be made using  $^{68}\text{Ge}$  rod source that can be retracted into Pb holder when not in use

Relative rate of scatter coincidences compared to true coincidences increased in continuous ring configurations

## Section 3

# Data acquisition

# Event recording topologies



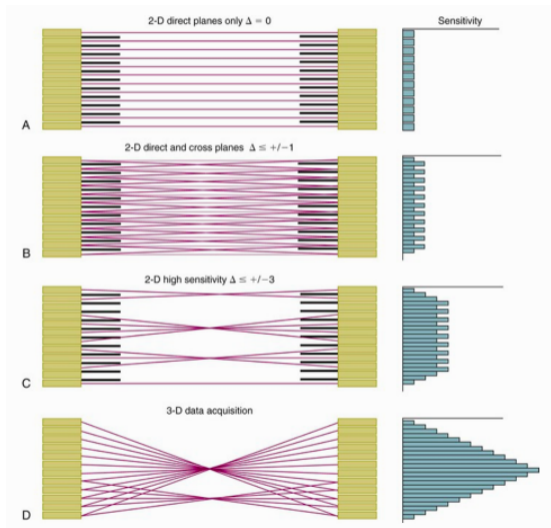
A) 2D data acquisition: septa such that:

- Accept only 'in line'  $\gamma$  pairs
- Reduced rate of scatters & randoms
- Recons: e.g. filtered back projection
- Least efficient

B) Cross planes: septa such that  $\Delta = \pm 1$ :

- Accept coincidences in neighbouring cells
- Increased rate of scatters & randoms
- Scanner centre, effective separation =  $\frac{d}{2}$
- Recons: as in A using effective separation
- For  $n$  rings  $\Rightarrow 2n - 1$  image planes
- Efficiency enhanced

# Event recording topologies



- C) Cross planes: septa such that  $\Delta = \pm 2; \pm 3$ :
- Accept coincs for cells with  $|\Delta| = 1, 2, 3$
  - Increased rate of scatters & randoms
  - Recons: for large  $|\Delta|$  resolution decreases
  - Efficiency enhanced
- D) 3D acquisition mode: no septa
- Accept all coincidences
  - Sensitivity increases  $\times 4 - \times 8$
  - Recons: require 3D algorithm
  - Increased rate of scatters & randoms
  - Most efficient

## Numerical comparison of sensitivities

Histograms in figures A–D indicate spacial dependence of relative efficiency;

→ indicates, for example, object of interest should be in the centre of a 3D scanner

For some 'typical' systems:

- PET scanner in 2D mode (1 slice per detector ring): 0.002–0.005 counts/s/Bq
- PET scanner in 3D mode (coincidences between all rings): 0.02–0.1 counts/s/Bq
- SPECT (for comparison): 0.0001–0.0003 counts/s/Bq

## Summary of section 3

Resolution and sensitivity can be improved by expanding range of allowed coincidences

Sensitivity in PET can exceed that of SPECT by more than a factor of 10



## Section 4

# Corrections

## Corrections; normalisation

Want response to be proportional to activity in a given pixel

PET systems have many (10,000–20,000) PMTs. Various factors determine the signal recorded for a given number of incident photons, including:

- Precise dimensions of crystal in neighbourhood of PMT;
- Coupling of crystal to PMT;
- $\gamma$ 's angle of incidence and crystal uniformity;
- PMT gain and gain in electronics;
- Response of CFD;

So, require to “normalise” signal

## Corrections; normalisation

Exploit rod source; take data while performing  $360^\circ$  rotation of rod

Normalisation factor,  $\mathcal{N}_{ij}$  for pair of PMTs  $i, j$  is given by:

$$\mathcal{N}_{ij} = \frac{N_{ij}}{\bar{N}}$$

where  $N_{ij}$  is the number of coincidences recorded between PMTs  $i$  and  $j$  and  $\bar{N}$  is the mean number of coincidences for all PMT pairs

Normalised number of coincidences,  $\mathcal{C}_{ij}$  for PMT pair  $i, j$  is given by:

$$\mathcal{C}_{ij} = \frac{C_{ij}}{\mathcal{N}_{ij}}$$

where  $C_{ij}$  is the number of coincidences recorded between PMTs  $i, j$  recorded in a patient scan

## Corrections; random coincidences; delayed window method

Coincidence time window  $\Delta t$  usually set to  $2\tau$ , where  $\tau$  is the width associated with the PMT timing signal

Take  $t_{\text{delay}} \gg \Delta t$ , then the number of coincidences between:

- Hit in PMT  $i$  at  $t_i$  and
- Hit in PMT  $j$  at  $t_j = t_i + t_{\text{delay}} \pm \Delta t$

will give an estimate of the random coincidence rate

The delayed-window estimate of the random coincidence rate between PMTs  $i$  and  $j$  can be subtracted from the measured coincidence rate

Subtraction of the random coincidence rate leads to an increase in the statistical (counting) uncertainty:

$$\sigma(N_{\text{true}} + N_{\text{scat}}) = \sqrt{N_{\text{true}} + N_{\text{scat}} + 2N_{\text{random}}}$$

## Corrections; random coincidences; singles method

Random coincidence rate between PMTs  $i$  and  $j$  determined above:

$$\mathcal{R}_{\text{random}}(i, j) = \Delta t \mathcal{R}_{si} \mathcal{R}_{sj}$$

$\mathcal{R}_{\text{random}}(i, j)$  can now be subtracted PMT pair by PMT pair

Singles rate is large, so, correction for random coincidences based on singles has much greater statistical weight than delayed-window method

For the singles method the increase in the statistical (counting) uncertainty is:

$$\sigma(N_{\text{true}} + N_{\text{scat}}) = \sqrt{N_{\text{true}} + N_{\text{scat}} + N_{\text{random}}}$$

To use this method requires that the singles rate is monitored continuously

## Corrections; scatter coincidences

Energy resolution of BGO/LGO used in PET is inferior to that of NaI making the “dual window” approach used in SPECT is inappropriate for PET

Common approaches to the calculation of the scatter correction:

- 1 Use the “unscatter-corrected image” and transmission image as input to estimate the rate of scatters  
→ the image is then re-derived from the scatter-corrected image
- 2 Use a CT image taken in parallel with the PET image to derive the scatter correction  
→ the image is then re-derived from the scatter-corrected image
- 3 Use events reconstructed outside the object. Such events can only arise due to scatter  
→ the image is then re-derived from the scatter-corrected image

## Corrections; attenuation

Attenuation correction derived for two colinear photons derived for SPECT ... applies here too, so:

$$\mathcal{P}_{\text{coinc}} \propto \exp(-\mu D) \quad (1)$$

where  $\mathcal{P}$  is the probability a coincidence will be formed,  $\mu$  is the attenuation coefficient, and  $D$  is the total thickness of the subject

Equation 1 does not depend on the position of the source between the two PMTs

Attenuation correction can be obtained by taking a “blank” transmission scan with the rod source and a transmission scan with the patient in position. The correction factor for PMTs  $i$  and  $j$ ,  $A_{ij}$  is given by:

$$A_{ij} = \frac{\text{Blnk}_{ij}}{\text{Trns}_{ij}}$$

where  $\text{Blnk}_{ij}$  is the result of the blank scan and  $\text{Trns}_{ij}$  is the result of the patient scan

## Corrections; dead time

When the scanner is recording a valid coincidence event it is not able to record a second one

This leads to a period during which the scanner is “dead” and is referred to as “dead time”

Dead time is measured empirically using sources of varying activity to determine the fall-off in efficiency as a function of the activity of the source, the size of the object, and the detection threshold

The dead-time correction is then calculated using a computer model based on the measured dead time



## Summary of section 4

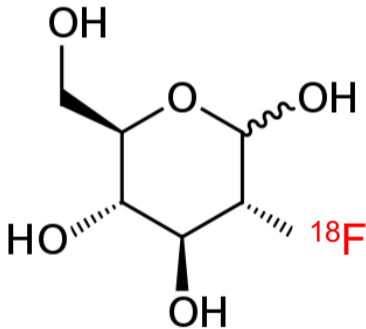
Corrections are applied for:

- Normalisation;
- Random coincidences;
- Scatter coincidences;
- Attenuation;
- Dead time

## Section 5

# Examples

# $^{18}\text{F}$ : fluorodeoxyglucose (FDG)

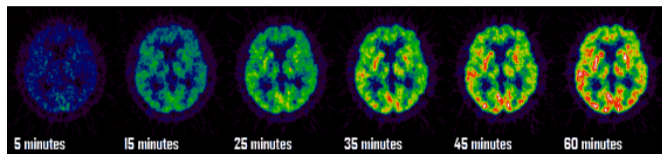


Analogue of glucose

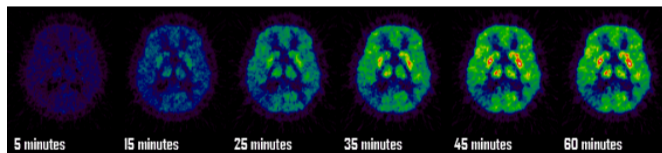
Uptake depends on rate of glucose metabolism

Marker for many disease states and of therapeutic effect

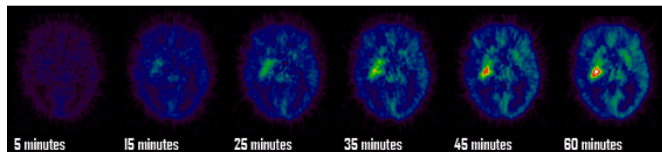
# FDG brain scans



**Healthy patient**  
- normal brain  
metabolism

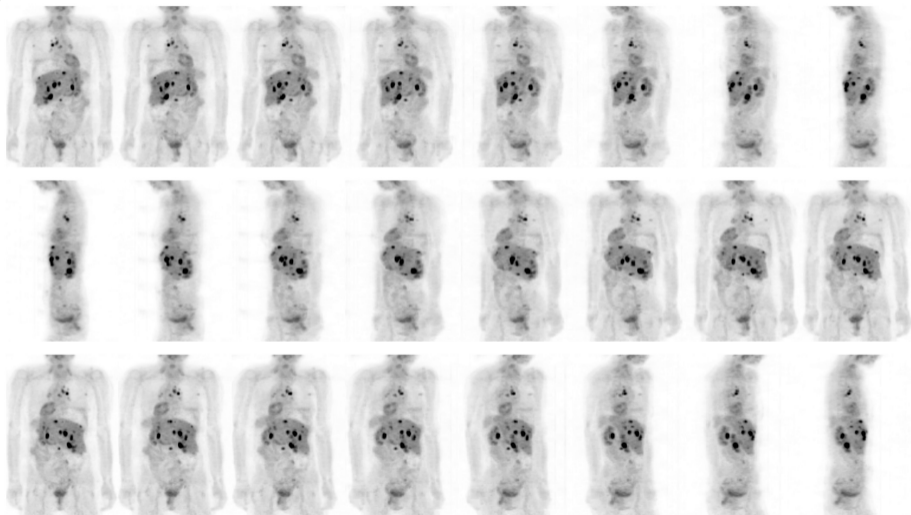


**Alzheimers**



**Brain tumour**

# FDG whole-body imaging



# Cardiac imaging with PET

